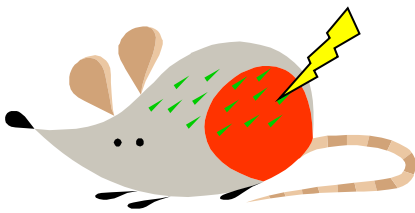


Colloquium

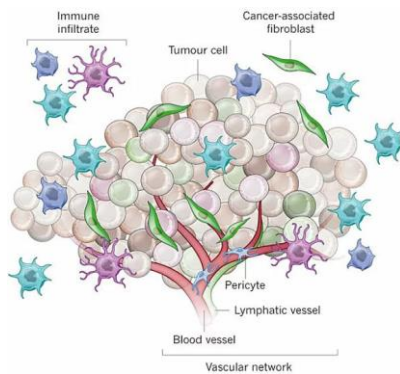
Department of Engineering and System Science, Institute of Nuclear
Engineering and Science,
National Tsing Hua University

Capitalization the adaptive changes in the tumor microenvironment after radiotherapy to enhance tumor control

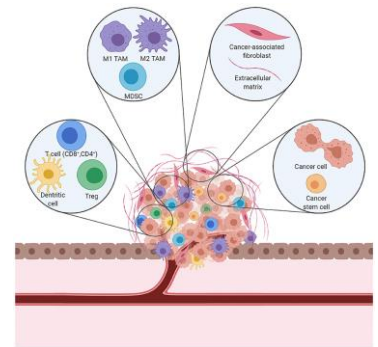
Fang-Hsin Chen, Associate Professor,
Institute of Nuclear engineering and Science,
National Tsing Hua University



Tumor model



Tumor microenvironment



Heterogeneous populations within tumor

15:30-17:00 P.M., Wednesday, November 2nd, 2022

NE69 ESS Building, NTHU

101, Sec2, Kaung-Fu Rd., Hsinchu 300044, Taiwan

Biography:

Fang-Hsin Chen is currently an Associate Professor at the Institute of Nuclear Engineering and Science, National Tsing Hua University. She received her Ph.D. degree in Medical Physics from National Tsing Hua University in 2009, and subsequently joined the Department of Medical Imaging and Radiological Sciences, and the Institute of Radiation Research of Chang Gung University. Her research interest and expertise includes radiation biology and oncology, for tumor control and normal tissue sparing.



fanghsin@mx.nthu.edu.tw