



國立清華大學
NATIONAL TSING HUA UNIVERSITY

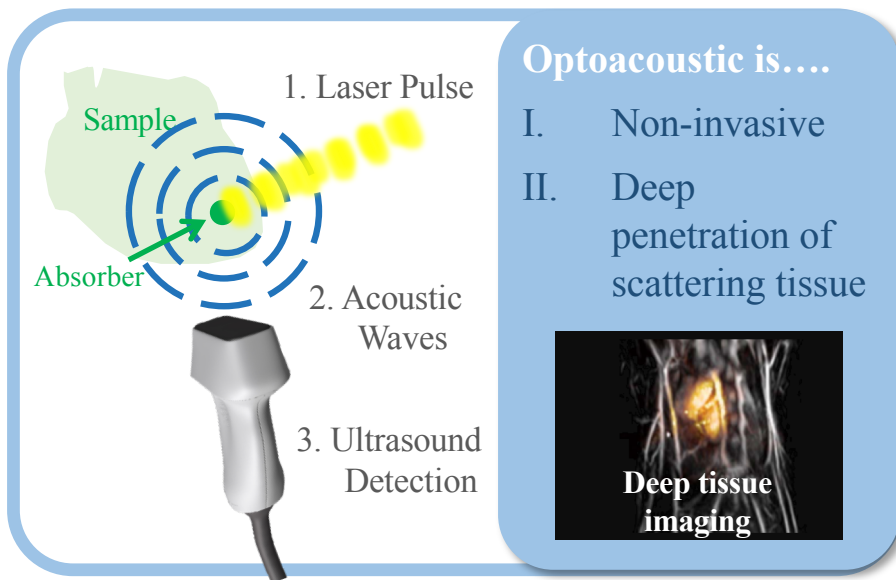
Colloquium

Department of Engineering and
System Science,
Institute of Nuclear Engineering
and Science,
National Tsing Hua University

Light and Sound: Biomedical Optoacoustic Imaging

林曉均 Hsiao-Chun Amy Lin

助理教授，生醫工程與環境科學系，
國立清華大學



15:30-17:00 P.M., Wednesday, Dec. 1st, 2021

NE69 ESS Building, NTHU

101, Sec2, Kaung-Fu Rd., Hsinchu 30013, Taiwan

Biography:



Hsiao-Chun Amy Lin is currently an Assistant Professor at the Department of Biomedical Engineering and Environmental Sciences, National Tsing Hua University. In 2017, she received her PhD in Biomedical Imaging from the Technical University of Munich, Germany. This was followed by a year of post-doctoral fellowship at the Helmholtz center of Munich. She also has ~3 years of industry experience working at iThera Medical GmbH (German Medical technology company) as an R&D engineer.

Her research interest is the development of optoacoustic tomography (OAT) systems for 1) preclinical cardiology and 2) clinical diagnostics.

Contact Information:

lin-hc@mx.nthu.edu.tw